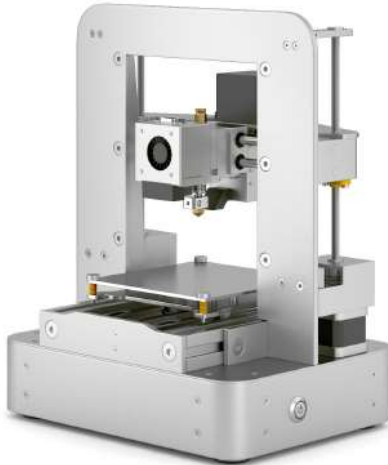


Rapide Lite 100 Technical Specifications



Rapide Lite 100

Specifications

Printer Size	280 x 215 x 350mm
Build Size	100 x 100 x 100mm
Build Volume	1,000 cm ³
Printing Material	PLA, TPU Flexible, Woodfill, Bronzefill, PETG
Filament Size	1.75mm
Minimum Layer Height	5 - 30 microns
Print Speed	Up to 120mm per sec
Material Type	Non- Proprietary
Mechanism	Cartesian
X Axis Resolution	6.25 Microns
Y Axis Resolution	6.25 Microns
Z Axis Resolution	1.25 Microns
AC Input	100 – 240V AC
Total Weight	6.5kg (approx)
Software	Cura, Slic3r
Operating System	Window, Mac, Linux

Other Features

Control Board	Reprap Melzi v2.0
Interface	USB, SD Card
Extruder Type	Q V2 Easy Load Extruder
Max Extruder Temp	260 °C
Nozzle Size	0.4mm
Build Platform	Polycarbonate
X Axis	X Wing Technology
Chassis	Anodized 5026 Aluminum
Frame	Anodized 5026 Aluminum
Components	Anodized 5026 Aluminum

Contact us now to find out more!

enquiry@simplifi3d.asia

(+65) 9672 2836

SIMPLIFI3D